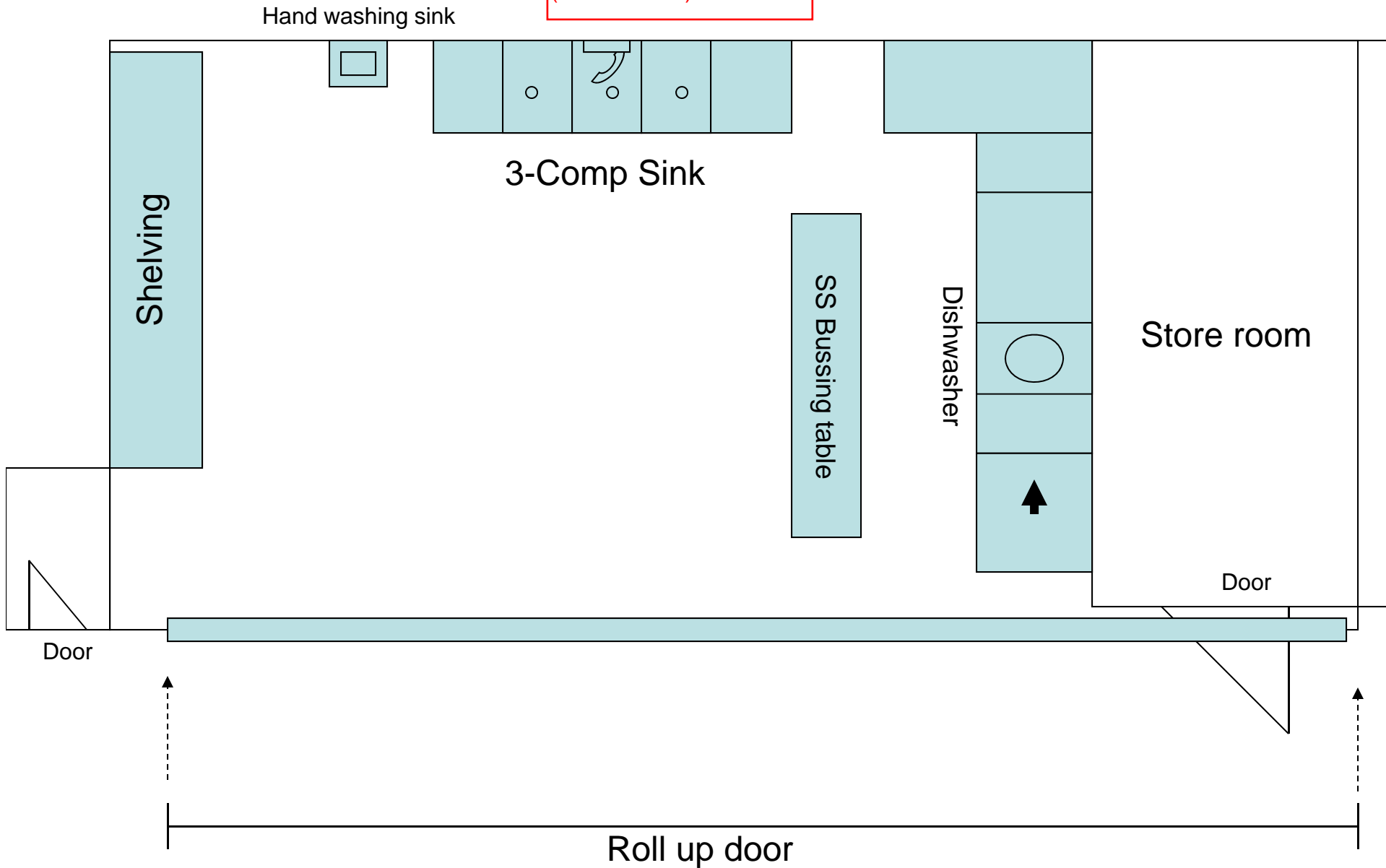
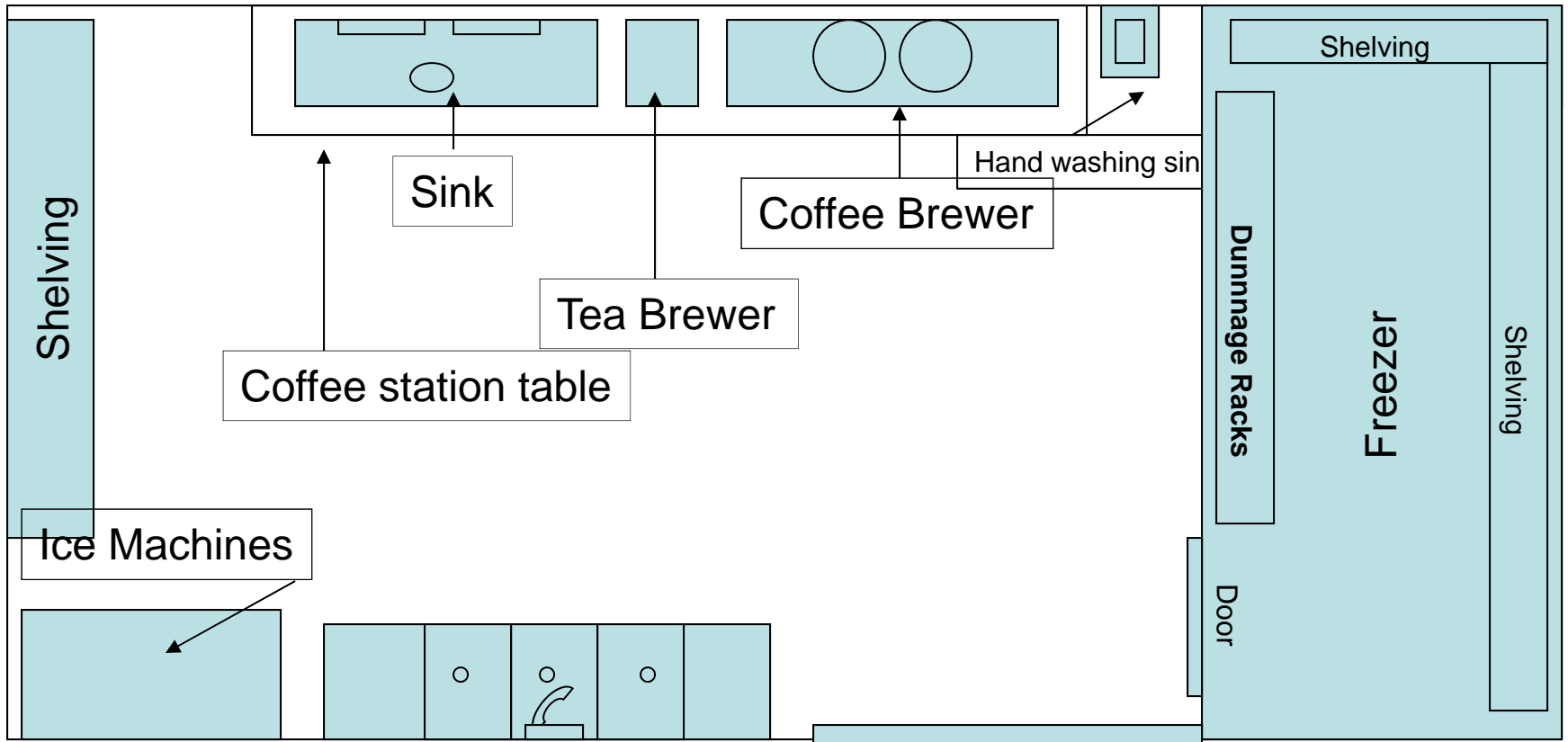


HALL B CONCESSIONS  
(Go Gourmet)



Note: Intent of these plans is to show schematic equipment layout only. DB Team will be responsible for working with District and Centerplate to finalize design and build concessions area.

HALL A CONCESSIONS  
(Tortilla Junction)



Roll  
up  
door



**Refrigerated Structures Division**  
**Morehead City, NC 28557 (800) 242-2559**

**Last Update:** laura 03/20/2013

**To:** Centerplate

**Attn:** Scott Middleton

**Quote No:** 13213-1-0-LJI

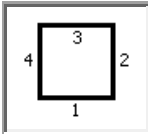
**Job Name:** Spokane Convention Center

**Date:** 03/20/2013 **PVD:** 12/20/2012(TF)

**From:** Laura Ibbitson  
 Swanson-Girard & Assoc  
 9800 Southern Pines Blvd, Suite L  
 Charlotte, nc 28273

**Phone:** (704)521-8811 **Fax:** (704)521-8801

**Box Shape**



**Indoor Structure**

**NSF APPROVED**

***Bally Prefabricated Exterior Dimensions:***

18'-3 1/2" Length x 8'-8 1/2" Width x 8'-6" Height

1 Compartment. With Floor

Ceiling: Single Span

***Panel Thickness:***

4" Exterior Vertical Used (7'-10") with 4" Floor, 4" Ceiling

**Details on Following Page(s)**

**NOTE:** Freight shown is an estimate based on current published rates. A fuel surcharge will be added and changes continuously.

<b>Walk-in Price:</b>	\$13,513.09	
<b>Refrigeration Price:</b>	\$4,373.65	
<b>Total Price (FOB Plant) (Less Refrig. Warranties)</b>	\$17,886.74	<b>Net</b>
<b>Estimated Freight:</b>	\$2,553.81	
<b>Optional Warranties: (not included in Total Price)</b>		
5 Year Compressor Only Warranty(s):	\$200.00	<b>Net</b>
5 Yr. System Parts With 1 Yr. Labor:	\$514.50	<b>Net</b>

**Payment terms and conditions are available upon request.**

*This quotation was based on information supplied to us which may or may not have been complete. Customer is responsible for reviewing this quotation for exclusions, deviations, and any improper information supplied to us.*

**Signature:** \_\_\_\_\_

Laura Ibbitson

**Date:** \_\_\_\_\_

*We are not responsible for the selection or recommendation of the panel finish for any building or walk-in application.*

**NOTE: Quoting Bally standard specifications, sizes, and finishes.**

***This quotation is good through 06/18/2013***

**Bally Refrigerated Boxes, Inc.** is compliant with Federal Energy Independence and Security Act of 2007 (Public Law 110-140) Title III; Section 312, regarding Walk-In Coolers and Walk-In Freezers.



**Refrigerated Structures Division**  
**Morehead City, NC 28557 (800) 242-2559**

**Last Update:** laura 03/20/2013

**To:** Centerplate

**Attn:** Scott Middleton

**Quote No:** 13213-1-0-LJI

**Job Name:** Spokane Convention Center

**Date:** 03/20/2013 **PVD:** 12/20/2012(TF)

**From:** Laura Ibbitson  
 Swanson-Girard & Assoc  
 9800 Southern Pines Blvd, Suite L  
 Charlotte, nc 28273

**Phone:** (704)521-8811 **Fax:** (704)521-8801

**Indoor Structure**

**NSF APPROVED**

**Bally Prefabricated Exterior Dimensions:**

18'-3 1/2" Length x 8'-8 1/2" Width x 8'-6" Height  
 1 Compartment. With Floor  
 Ceiling: Single Span

**Panel Thickness:**

4" Exterior Vertical Used (7'-10") with 4" Floor, 4" Ceiling

**Details and specifications for Quote No: 13213-1-0-LJI**

**Comments:**

Freezer

Refrigeration is calculated for storage only at a box temperature of -10° F. with a condensing unit ambient of 95° F.

**Base Finish:**

Vertical and Ceiling Panels: Embossed Galvalume (26 GA)

**Special Finishes:**

Interior Floor - Stainless Steel Rigidized (16 ga)

**Doors/Opening:**

1 48" x 78" Hinged Door in a 69" x 94" Panel

**Doors accessories:**

1 Int.Stainless Steel Ramp (42-48" Door)  
 1 Super Door 42-60" Wide , 36" high

**Accessories and Extras:**

1 Bally Standard Pressure Relief Port (< 400 sq/ft)  
 4 Fluorescent Light(s) (2) Tube 4' Long w/ Bulbs  
 1 Reinforce Interior Ramp  
 171 S/F 3/4" Plywood Foamed in Panel  
 36 S/F Emboss Galvalume (Closure Metal)

**Refrigeration:**

1 BEHA 030 L6 HT3BF (208-230/3/60)  
 3 HP A/C Herm Outdoor Low Unit (R404) 11600 BTU  
 1 BLP 314LE-SV-S2BEC 14000 (208-230/1/60)

**Estimated Shipping:**

Weight: 4,560.37

Destination: Spokane, WA 99201



**Refrigerated Structures Division**  
**Morehead City, NC 28557 (800) 242-2559**

**Last Update:** laura 03/20/2013

**To:** Centerplate

**Attn:** Scott Middleton

**Quote No:** 13213-1-0-LJI

**Job Name:** Spokane Convention Center

**Date:** 03/20/2013 **PVD:** 12/20/2012(TF)

**From:** Laura Ibbitson  
Swanson-Girard & Assoc  
9800 Southern Pines Blvd, Suite L  
Charlotte, nc 28273

**Phone:** (704)521-8811 **Fax:** (704)521-8801

---

Shipping Calculation:  $\$0.56 \times 4,560.37\# = 2553.81$



**Refrigerated Structures Division**  
**Morehead City, NC 28557 (800) 242-2559**

**Last Update:** laura 03/20/2013

**To:** Centerplate

**Attn:** Scott Middleton

**Quote No:** 13213-1-0-LJI

**Job Name:** Spokane Convention Center

**Date:** 03/20/2013 **PVD:** 12/20/2012(TF)

**From:** Laura Ibbitson  
 Swanson-Girard & Assoc  
 9800 Southern Pines Blvd, Suite L  
 Charlotte, nc 28273

**Phone:** (704)521-8811 **Fax:** (704)521-8801

**Deviations (Alternates, Remarks, Clarifications, Etc.):**

Quoting Bally Standard Hermetic Pre-assembled Remote Refrigeration.

Bally does not recommend the use of heavy carts, pallet jacks or fork lifts on top of the floors. Warranty for floors subjected to this type of use would not be covered by Bally.

**Exclusions (Items Not Supplied by Bally):**

- |   |  |
|---|--|
| <input checked="" type="checkbox"/> Shelving, Racks, Interior Accessories | <input checked="" type="checkbox"/> Caulking and Sealants                    |
| <input type="checkbox"/> Labor on Warranties                              | <input type="checkbox"/> Refrigeration Systems                               |
| <input checked="" type="checkbox"/> Alarm Systems                         | <input checked="" type="checkbox"/> Refrigeration Accessories                |
| <input checked="" type="checkbox"/> Supervision                           | <input type="checkbox"/> Closure Panel and Trim                              |
| <input checked="" type="checkbox"/> Tubing, Wiring for Rfg. Equipment     | <input checked="" type="checkbox"/> Sleeves, Penetrations, Escutcheon Plates |
| <input checked="" type="checkbox"/> Compressor Rack                       | <input checked="" type="checkbox"/> Floor Insulation and Vapor Barrier       |

**Cancelled Orders:**  
 Cancelled unshipped standard walk-ins will be charged a 30% restocking fee plus the cost of special panels. Cancelled refrigeration systems will be charged a 30% restocking fee and the cost of any freight accrued. Buy-out items will be charged a 25% restocking fee plus any freight accrued.

**Agency Ratings:** Bally units comply or surpass applicable Flame Spread-25, UL, UL 723, & NSF standards in a manner conforming to ASTM E-84, and Factory Mutual standards.

**Quotation Limitations:**  
 This quotation was based upon the specifications given to Bally which may possibly be incomplete. Bally is not responsible for items missing from the quotation due to incomplete or excluded items in the specifications received from the customer. The customer is responsible for reviewing the quotation for omissions or deviations from the specifications given to Bally. All portions of the quotation are subject to revision upon receipt of detailed specifications or if changes are made following the delivery of the original quotation.

**Panel Construction:** Bally Panels are manufactured with environmentally friendly HFC 245-FA polyurethane foam. This polyurethane foam offers the highest thermal insulation value and the most energy efficiency per cubic inch in comparison to similar foams. It has a zero Ozone Depletion Potential (ODP) and a low Global Warming Potential (GWP). It is not considered a Volatile Organic Compound (VOC) in the US. Standard 4" Bally panels meet the 2009 Federal Energy Standards.

**Refrigerants:** Unless otherwise specified, refrigeration systems are quoted with environmentally friendly HFC R404A refrigerant. It has a zero Ozone Depletion Potential (ODP). The EPA lists it as an acceptable substitute for ozone-depleting substances.

**Automatic Door Closers:** Bally includes automatic door closers and spring loaded hinges on all doors 42" wide and smaller as a standard feature with no additional charge that meet the 2009 Federal Energy Standards.

**Motors:** Bally units are quoted with EC and PSC motors in compliance with federal energy standards, for increased energy savings.

**Lighting:** Bally units are quoted with lighting in compliance with federal Energy Standards for increased energy savings.

**Optional Features:** Bally offers additional optional energy-saving features such as Walk-In Alarm & Light Management systems that comply or surpass the 2009 Federal energy regulations.



**NATIONAL REFRIGERATION AND  
AIR CONDITIONING CANADA CORP.**  
159 ROY BLVD, PO BOX 2020  
BRANTFORD, ON  
CANADA N3T 5Y6

**BEHA030L6-HT3B**

**EH-LINE HERMETIC  
CONDENSING UNIT**

PURCHASER :

SUBMITTED BY : **Laura Ibbitson**

PROJECT : **SPOKANE CONVENTION CENTER**

DATE : **20 Mar 2013**

ORDER # : **03000.57745.00469-A00**

ITEM # : **1**

QUOTE # : **Q20CLLIA-A**

ID # :

PURCHASER'S PO # :

TAGGING :

**MODEL FEATURES**

- Copper tubing secured with cushion clamps
- Crankcase heater
- Flooded head pressure control (non adjustable)
- High efficiency enhanced copper tube and aluminium fin coil design
- High efficiency PSC fan motor with internal overload protection
- Outdoor weather-resistant housing with removable hood
- Pre-formed piping
- Receiver with fusible plug and outlet valve
- Suction Service valve
- Units are shipped with Helium holding charge
- Weatherproof electrical control box with compressor contactor and fused control circuit
- Adjustable low pressure control with flex hose / fixed high pressure control

**MODEL OPTIONS ( \* = Shipped Loose )**

**PRE-ENGINEERED OPTION PACKAGE**

- A - STD
- B
- C
- D
- E
- F
- G
- H
- J

**DEFROST FUSING - SHOW SET QTY**

- Up to 30 Amps
- 35 Amps to 60 Amps

**ELECTRIC DEFROST KIT  
(TIMECLOCK INCL.)**

- 1 Up to 40A Htrs, 30A Fans 1 Evap
- Up to 60A Htrs, 30A Fans 1 Evap
- Up to 40A Htrs, 30A Fans 2 Evap
- Up to 60A Htrs, 30A Fans 2 Evap
- Up to 60A Htrs, 40A Fans 3 Evap
- Up to 80A Htrs, 50A Fans 3 Evap

**115V Control Circuit**

- 30A Contactor
- 40A Contactor
- 60A Contactor

**ADJUSTABLE PRESSURE CONTROLS**

- Danfoss Dual with flex hose
- Johnson Dual with flex hose
- Separate High/Low with flex hose

**BALL VALVE**

- \*Liquid Line
- \*Suction Line

**CABINET FINISH**

- Painted Grey

**CAPACITY CONTROL BYPASS**

- HG Bypass to Evaporator
- HG Bypass to Suction Line

**Compressor Circuit Breaker**

- Compressor Time Delay Relay

**CONDENSING UNIT PRISON PACKAGE**

- Tamper Proof Screws
- Crankcase Pressure Regulator
- Discharge Air Hood

**DISCONNECT SWITCH**

- Fused
- Non-Fused

**EC Condenser Fan Motor + Speed Controller**

- Extended 4-Year Compressor Warranty
- Extended Leg Kit

**COIL COATING**

- ElectroFin Coating
- Heresite Coating

**FIN AND MATERIAL**

- Gold Coat Fins
- Copper Fins
- Hail Guard for Condenser
- Heated and Insulated Receiver

Hoffmann Fan Speed Control

Insulated Suction Line

**LIQUID LINE FILTER + SIGHT GLASS**

- 1 Sealed

Liquid Line Lock-Out Relay

**LIQUID LINE SOLENOID VALVE**

- \*Standard 230V Coil
- \*Standard 115V Coil

Oversized Receiver

**PHASE / VOLTAGE MONITOR**

- 3-Lead

Pump Down Toggle Switch

Receiver Inlet Ball Valve

Single Point Electrical

Stainless Steel Housing

**SUCTION ACCUMULATOR**

- With Heat Exchanger
- Without Heat Exchanger

**SUCTION FILTER**

- Sealed Type

**TIME CLOCK**

- Paragon 8145 Style
- \*230V Paragon 8145 Style
- \*115V Paragon 8145 Style

Two Valve Adj Flooded Head Pressure Control

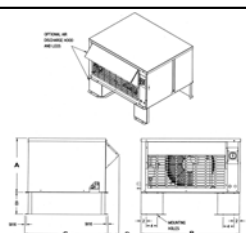
Wind Guard

QuickVac Valves

VOLTAGE	SYSTEM REFRIGERANT	RATING	SUCTION TEMP	AMBIENT TEMP	CAPACITY
208-230/3/60	R404A	3Hp	-18.6 °F	95.0 °F	12,070 BTUH

FANS			COMPRESSOR				CIRCUIT TOTAL			
QTY	POWER	FLA/FAN	TYPE	QTY	RLA	LRA	AMPS	WATTS	MCA†	MOP‡
1		1.1	CF12K6ETF5	1	11	85	12.1		14.9	25

Dim A	19 7/8 in
Dim B	36 3/8 in
Dim C	30 3/8 in
Dim D	4 in
LIQUID	1/2 in
SUCTION	7/8 in
SOUND	-
WEIGHT	292 lb
CAPACITY	14 lb



Dimensions shown are for standard unit less options. See certified drawing for more details.  
 \* Indicates Option Is Shipped Loose  
 † MCA.. Minimum Circuit Ampacity  
 ‡ MOP.. Maximum Overcurrent Protection  
 MCA & MOP Shown Here are reflective of the condensing unit ONLY. Single point connections WILL show different on dataplate.

APPROVALS	

**APPROVED BY :** \_\_\_\_\_ **DATE :** \_\_\_\_\_

Approval of this drawing signifies that the equipment is acceptable under the provision of the job specifications. Any change made hereon by any person whomsoever subject to acceptance by NATIONAL REFRIGERATION at its home office.



**NATIONAL REFRIGERATION AND  
AIR CONDITIONING CANADA CORP.**

159 ROY BLVD, PO BOX 2020  
BRANTFORD, ON  
CANADA N3T 5Y6

Order Item No: 1  
**BEHA030L6-HT3B**

**EH-LINE HERMETIC  
CONDENSING UNIT**

DATE : 20 Mar 2013

PURCHASER :

PROJECT : SPOKANE CONVENTION CENTER

SUBMITTED BY : Laura Ibbitson

NATIONAL REFRIGERATION will furnish equipment in accordance with this drawing and specifications, and subject to its published warranty. Approval of this drawing signifies that the equipment is acceptable under the provision of the job specifications. Any change made hereon by any person whomsoever subject to acceptance by NATIONAL REFRIGERATION at its home office.

Dimensions shown are for standard unit less options.

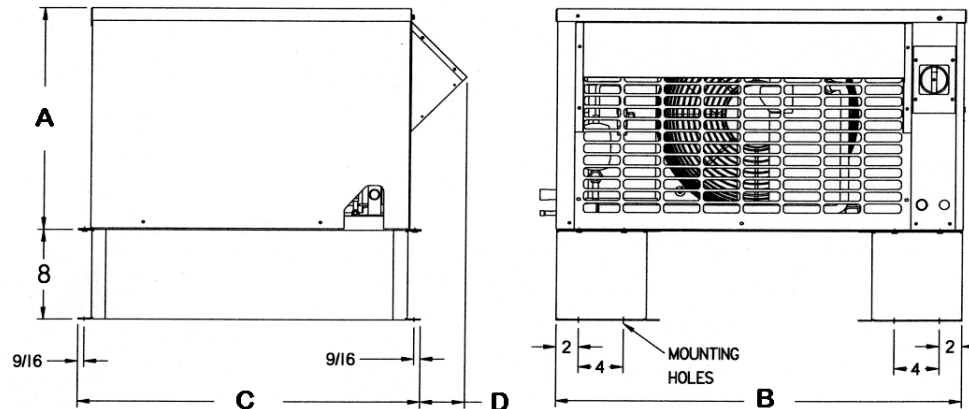
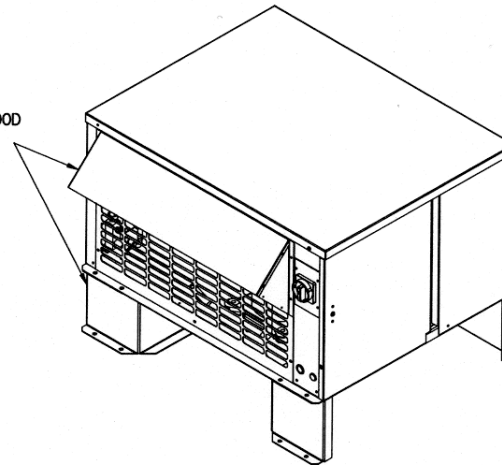
DIMENSIONS	
DIMENSION A	19 7/8 in
DIMENSION B	36 3/8 in
DIMENSION C	30 3/8 in
DIMENSION D	4 in
DIMENSION E	
DIMENSION F	
DIMENSION G	0 in
DIMENSION H	

CONNECTIONS	
LIQUID	1/2 in
SUCTION	7/8 in
DRAIN	
WATER	
DISCHARGE	
PAN LOOP	
HOT GAS SIDE PORT	
HOT GAS INLET	
HOT GAS OUTLET	

OTHER	
SHIPPING WEIGHT	292 lb
CAPACITY	14 lb

APPROVALS			
			<b>MEA</b>

OPTIONAL AIR  
DISCHARGE HOOD  
AND LEGS



NOTES:





**NATIONAL REFRIGERATION AND  
AIR CONDITIONING CANADA CORP.**  
159 ROY BLVD, PO BOX 2020  
BRANTFORD, ON  
CANADA N3T 5Y6

**BLP314LE-S2B\_ECM**

**LOW PROFILE  
EVAPORATOR**

PURCHASER :

SUBMITTED BY : **Laura Ibbitson**

PROJECT : **SPOKANE CONVENTION CENTER**

DATE : **20 Mar 2013**

ORDER # : **03000.57745.00469-A00**

ITEM # : **2**

QUOTE # : **Q2OCLLIA-A**

ID # :

PURCHASER'S PO # :

TAGGING :

**MODEL FEATURES**

- 3/8" Tubing coil construction (reduces refrigerant operating charge)
- Factory installed solenoid valve wire harness
- Heavy gauge textured aluminum cabinet construction resists scratches/corrosion
- Spacious piping end compartment allows for easy assembly
- Hinged drain pan with central universal drain connection (3/4" drain)
- Front access to spacious electrical and header compartments
- Schrader connection on suction header
- Attractive and durable high density polyethylene fan guards
- Ultra efficient Electronically Commutated Motor (ECM)
- ECM with SmartSpeed Technology
- High efficiency enhanced copper tube and aluminium fin coil design

**MODEL OPTIONS ( \* = Shipped Loose )**

**PRE-ASSEMBLED EVAP**

- Sporlan TXV, LLSV,T-stat
- SmartVapII with Sporlan TXV & SolvIv
- KE2 Demand Defrost w/Sporlan TXV
- KE2 Demand Defrost w/Sporlan EEV
- \*KE2 Demand Defrost w/Sporlan TXV
- \*KE2 Demand Defrost w/Sporlan EEV
- Danfoss TXV, LLSV, T-stat
- SmartVapII with Danfoss TXV & SolvIv
- Emerson TXV, LLSV,T-stat
- KE2 Demand Defrost w/KE2 EEV
- \*KE2 Demand Defrost w/KE2 EEV

**ADJUSTABLE T-STATS**

- \*Johnson A19ABC-24
- \*Johnson A419ABC-1
- \*Saginomiya
- \*Danfoss
- Ranco F25 - Adjustable DT, Fixed FD

**Aux Sideport Connector**

- Painted White
- Painted Black
- Stainless Steel

**CABINET FINISH**

**CPC SENSORS**

- Coil Temp Sensor
- Return Air Temp Sensor
- Suction Pressure Transducer

**DEMAND DEFROST ELECTRONIC CONTROLLER**

- KE2 Therm - Demand Defrost
- \*KE2 Therm - Demand Defrost

**Dual Circuit**

**EEV SENSOR/TRANSDUCER BRAND**

- CPC/Emerson
- Other - Specify in Notes

**ELECTRONIC CONTROLLER**

- SmartVapII
- \*Sporlan Kelvin II EEV Controller
- \*Emerson EEV Controller
- \*Other EEV Controller- Specify MFR Model in Notes

**EVAPORATOR PRISON PACKAGE**

- Tamper Proof Screws

**EXPANSION VALVE**

- Sporlan TXV
- Danfoss TXV
- Sporlan EEV (less sens+trans)
- Emerson TXV

**COIL COATING**

- ElectroFin Coating
- Heresite Coating

**FIN AND MATERIAL**

- Copper Fins
- Insulated Drain Pan

**KE2 THERM**

- \*Router #20184
- \*8 Port Switch #20166
- \*CAT5e Shielded Cable - 50ft w/connectors

- \*Contactor Kit - 50A #20217

**\*Liquid / Suction Heat Exchanger**

**LIQUID LINE SOLENOID VALVE**

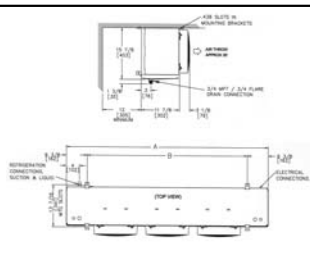
- Danfoss
- Sporlan
- Emerson

**Nitrogen Charged and Sealed**

- Room Thermostat
- \*Room Thermostat
- Wire Fan Guards

VOLTAGE		SYSTEM REFRIGERANT		AIR FLOW	EVAP. TEMP	BOX TEMP	CAPACITY		
208-230/1/60		R404A		2860 CFM	-18.6 °F	-10.0 °F	12,138 BTUH		
FANS			HEATERS			CIRCUIT TOTAL			
QTY	POWER	FLA/FAN	TYPE	QTY	AMPS	AMPS	WATTS	MCA†	MOP‡
3	0.07HP	0.6				1.8	180	2	15
DEFROST HTRS					11.9		2730	14.8	15

Dim A	62 1/4 in
Dim B	49 1/4 in
Dim C	
Dim D	
DISTRIBUTOR	1/2 in
SUCTION	7/8 in
SOUND	-
WEIGHT	109 lb
CHARGE	3 lb



Dimensions shown are for standard unit less options. See certified drawing for more details.  
\* Indicates Option Is Shipped Loose  
† MCA.. Minimum Circuit Ampacity  
‡ MOP.. Maximum Overcurrent Protection

APPROVALS	

APPROVED BY :

DATE :

Approval of this drawing signifies that the equipment is acceptable under the provision of the job specifications. Any change made hereon by any person whomsoever subject to acceptance by NATIONAL REFRIGERATION at its home office.



**NATIONAL REFRIGERATION AND  
AIR CONDITIONING CANADA CORP.**

159 ROY BLVD, PO BOX 2020  
BRANTFORD, ON  
CANADA N3T 5Y6

Order Item No: 2  
**BLP314LE-S2B\_ECM**  
**LOW PROFILE  
EVAPORATOR**

NATIONAL REFRIGERATION will furnish equipment in accordance with this drawing and specifications, and subject to its published warranty. Approval of this drawing signifies that the equipment is acceptable under the provision of the job specifications. Any change made hereon by any person whomsoever subject to acceptance by NATIONAL REFRIGERATION at its home office.

DATE : **20 Mar 2013**  
PURCHASER :  
PROJECT : **SPOKANE CONVENTION CENTER**  
SUBMITTED BY : **Laura Ibbitson**

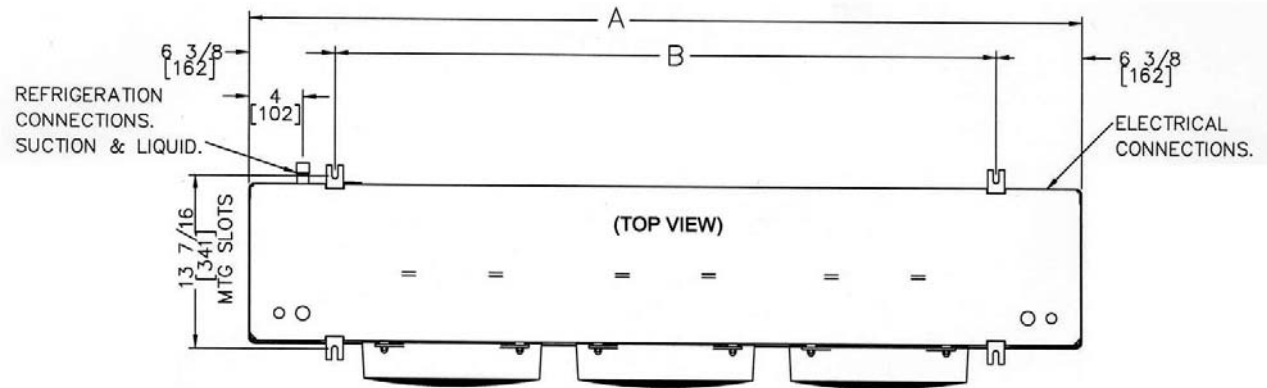
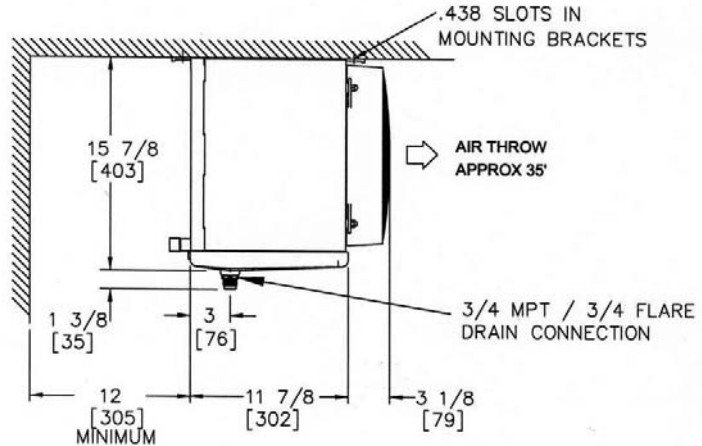
Dimensions shown are for standard unit less options.

DIMENSIONS	
DIMENSION A	62 1/4 in
DIMENSION B	49 1/4 in
DIMENSION C	
DIMENSION D	
DIMENSION E	
DIMENSION F	
DIMENSION G	0 in
DIMENSION H	

CONNECTIONS	
DISTRIBUTOR	1/2 in
SUCTION	7/8 in
DRAIN	3/4 in
WATER	
DISCHARGE	
PAN LOOP	
HOT GAS SIDE PORT	
HOT GAS INLET	
HOT GAS OUTLET	

OTHER	
SHIPPING WEIGHT	109 lb
CHARGE	3 lb

APPROVALS			



NOTES:

# SmartVap II™

ELECTRONICALLY CONTROLLED SYSTEM

## Electric Defrost Made Smarter and Simpler

### It's Smart

#### Electronically Controls:

- Box Temperature
- Defrost Initiation
- Defrost Termination
- Fan Delay

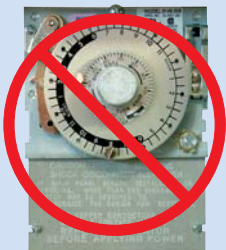
### It's Simple

#### 2 Pipes, 2 Wires, It's Done!

- Eliminates wiring back to condensing unit
- Factory Pre-set to suit most applications
- Extremely simple user interface



## SmartVap II™ Controller replaces these components



Time Clock



Room Thermostat



Defrost Termination/  
Fan Delay Thermostat



Defrost Heater  
Contactor



Defrost Heater  
Fusing

Available for electric defrost single phase low profile evaporators, up to 25 Amp. maximum overcurrent protection.  
Available for air defrost single phase low profile evaporators.  
Consult factory for other applications



# The Ultimate Electric Defrost Unit Cooler

Bally Refrigeration has taken the concept of electronic controls and made it simple. SmartVap II™ is a simple control located in the evaporator that controls box temperature and all aspects of the electric defrost. Evaporator includes factory installed:

- Selected Nozzle
- Thermostatic Expansion Valve
- Solenoid Valve
- Disconnect Switch (optional)



By eliminating the time clock and heater contactor usually located in the condensing unit, the SmartVap II™ makes wiring the refrigeration system a breeze.

Also eliminating the thermostat, defrost termination switch and the fan delay switch, SmartVap II™ reduces costly component failures and simplifies field installation.

PLUS - as an electronic controller, SmartVap II™ allows for more accurate temperature control in the box.

SmartVap II™ is field adjustable for unique applications.

## **2 Pipes + 2 Wires = Simple**

*Bally Refrigeration is a World leader in the insulated panel industry, providing topnotch insulated panels for commercial and institutional use in walk-in coolers, walk-in freezers, refrigerated buildings, modular structures, blast chillers and mortuary coolers. Bally Refrigeration also offers a complete line of refrigeration superior products, ideal for fast-freezing or fresh product storage in warehouses, processing plants and supermarkets.*



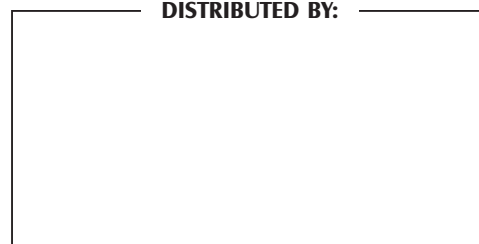
**General Sales, Parts & Service Manufacturing & Engineering**

135 Little Nine Drive, Morehead City, NC 28557

252-240-2829 • 1-800-24-BALLY • FAX: 252-240-0384

e-mail: [ballysales@ballyrefboxes.com](mailto:ballysales@ballyrefboxes.com) • [www.ballyrefboxes.com](http://www.ballyrefboxes.com)

DISTRIBUTED BY:



Bulletin: B10-SVII

*Due to Manufacturer's policy of continuous product improvement, the Manufacturer reserves the right to make changes without notice.*



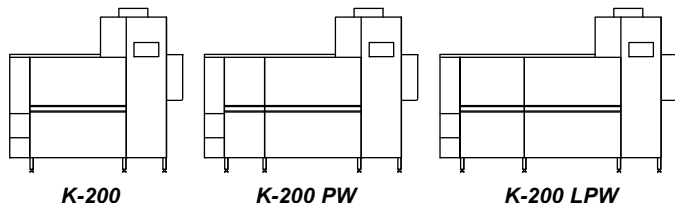
# K-200 SERIES

## HOT WATER SANITIZING SINGLE-TANK RACK CONVEYOR DISHWASHERS

The clean solution

### Special Features:

- **Low water consumption** - 84.7 gallons (320.6 liters) per hour, 0.35 gallons (1.34 liters) per rack
- **Pumped final rinse** isolates the machine from variations in water line pressure, ensuring consistent washing results
- **Pumped auxiliary rinse zone** supplements the final rinse for improved rinsing and increased efficiency
- **Standard Waste Air Heat Recovery System** reclaims the waste heat generated by the machine and uses it as free energy to preheat the incoming rinse water. This reduces energy consumption and allows hot water sanitization from a cold water supply (as low as 50°F / 10°C)
- **Standard internal booster heater** works with the Waste Air Heat Recovery System for improved efficiency
- **MIKE 3 electronic controller** for fully automatic operation and advanced service diagnostics. Each zone activates water flow only when a rack enters the zone to conserve water, energy and detergent



### Standard Features:

- **ENERGY STAR** Qualified
- Capacity **240** racks per hour
- Water consumption **0.35** gallons (1.34 liters) per rack
- All 304-series stainless steel construction
- Double-wall insulated construction on front, top and back to improve operator safety, conserve heating energy, and reduce noise and heat loss into the dishroom
- Improved side-drive system ensures complete water coverage from every angle, even the bottom of the rack, while reducing jerking motions that can shift ware
- Large, easily-removed pan strainer(s). Models equipped with a prewash include a separate prewash scrap basket
- Large, insulated front door(s) are spring-loaded to open easily and STAY open, without latching
- Computer-positioned wash arms in easily-removed manifolds. Arms and manifolds are stainless steel, eliminating high-wear gaskets and O-rings. Nozzles are slotted and concave to minimize clogging
- Front-sloping tanks for easier cleaning. External, foot-lever drain system makes draining fast, safe and simple
- Powerful 3hp (2.2 kW) wash pump is 50% more powerful than the industry standard for outstanding cleaning ability. Pump motor is vertically-mounted to be self-draining and easily removed for servicing
- Single-point drain connection
- Single-point powered vent connection
- Low-level heater protection

### Options:

- Revolutionary blower drying system - uses only 3 kW of heating energy. Available in two lengths for a variety of ware requirements
- CSS Top Chemical Savings System - acts as a pre-rinse to reduce the need for pre-scrapping; processes water continuously through cyclone separators to remove food soil; reduces detergent consumption by up to 50%
- Hinged front access door(s)
- Steam coil or electric heating
- Single-point electrical connection
- External vent fan control
- Table limit switch (end stop or whisker switch versions)
- Direct drive sideloader
- 90° powered loader or unloader
- Flanged feet
- Drain water tempering kit

### Models:

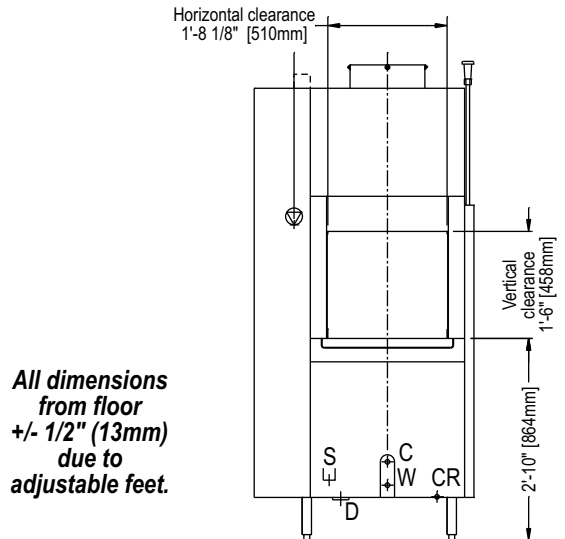
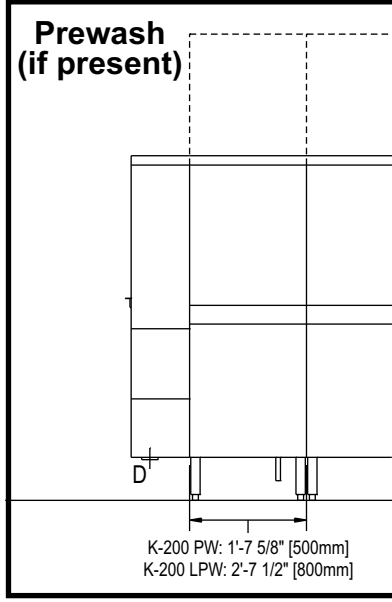
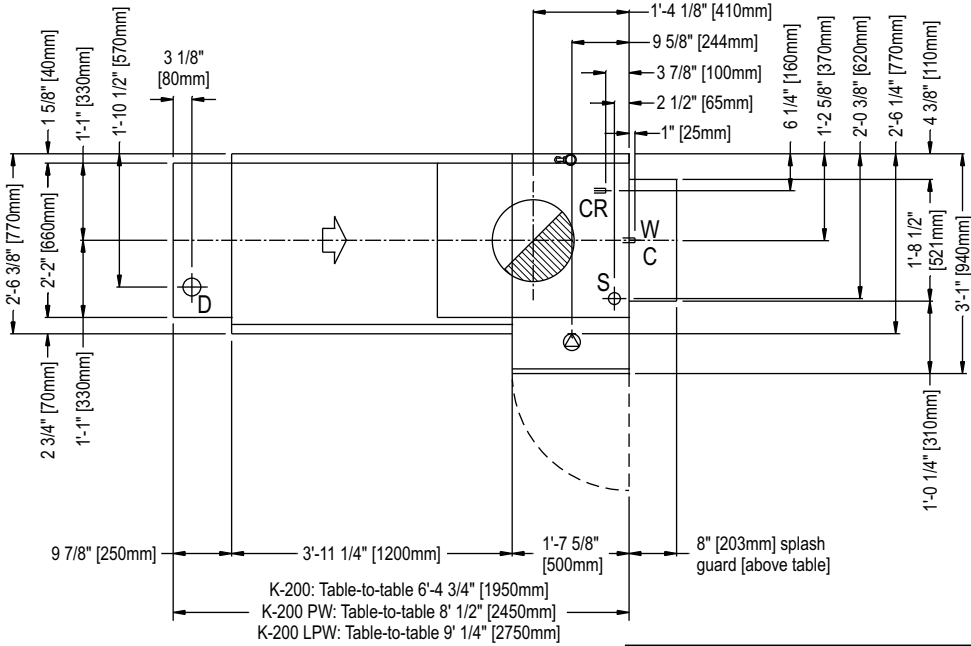
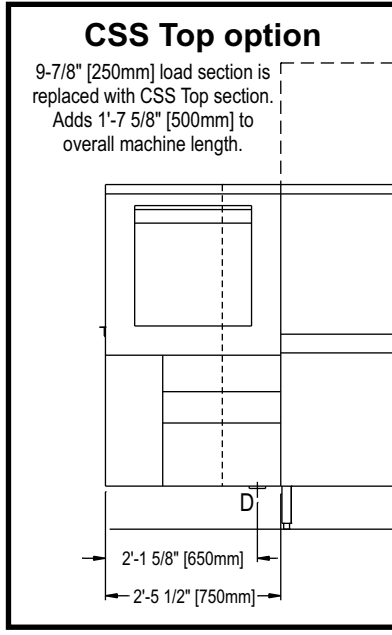
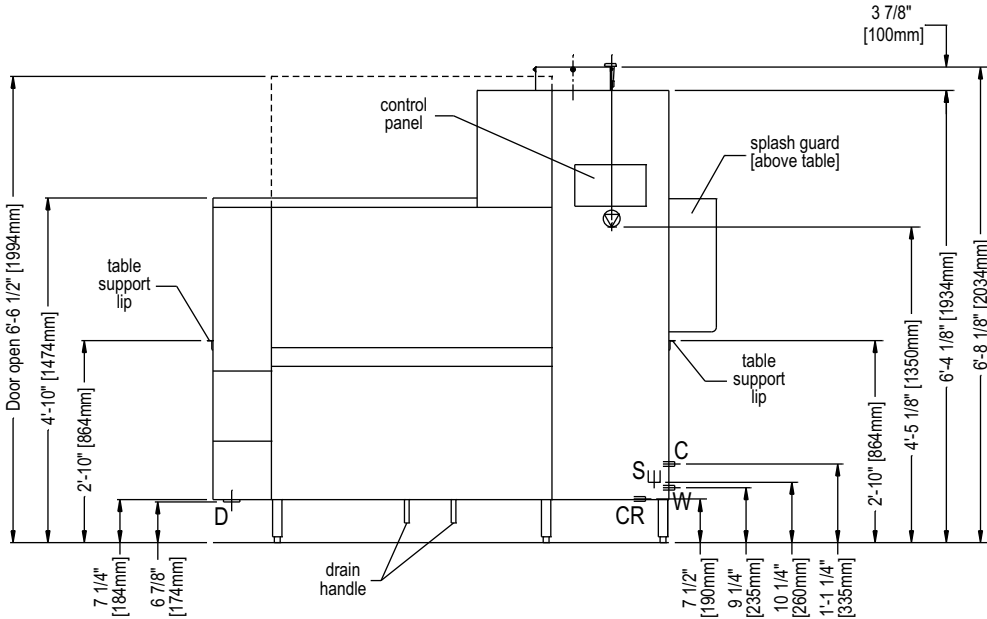
- ~~K-200: 6' 4-3/4" (1950mm) chamber with wash, auxiliary rinse and final rinse zones~~
- ~~K-200 PW: Adds 19-5/8" (500mm) prewash to K-200 configuration. Overall length 8' 1/2" (2450mm)~~
- **K-200 LPW: Adds 31-1/2" (800mm) prewash to K-200 configuration. Overall length 9' 1/4" (2750mm)**



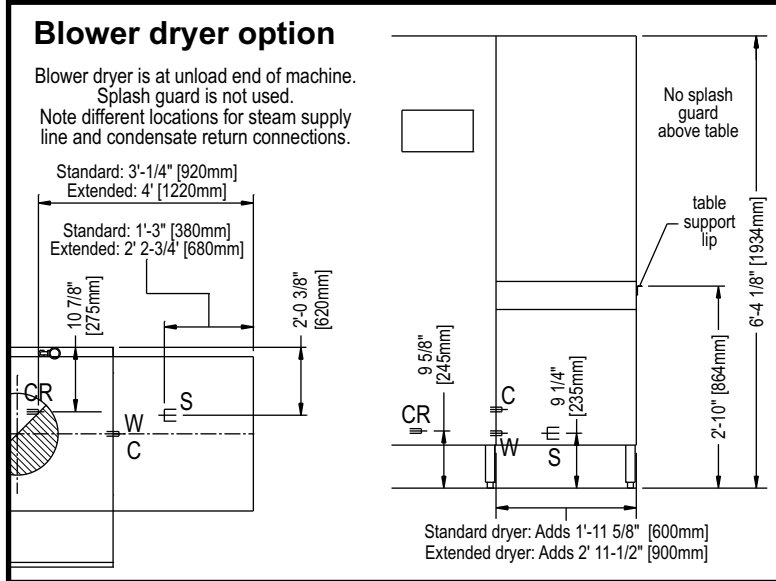




# K-200 Series, left-to-right - steam heat

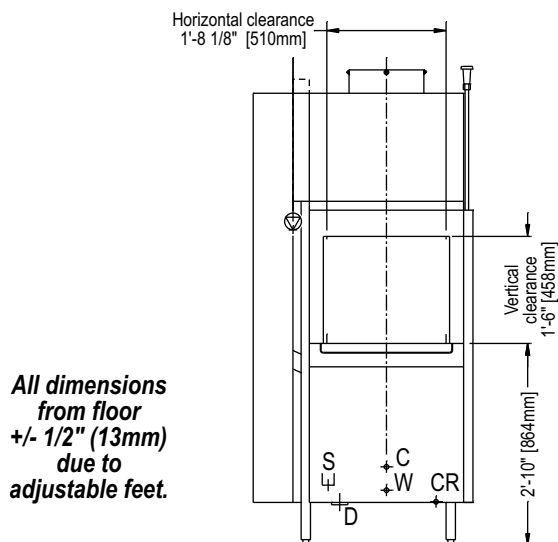
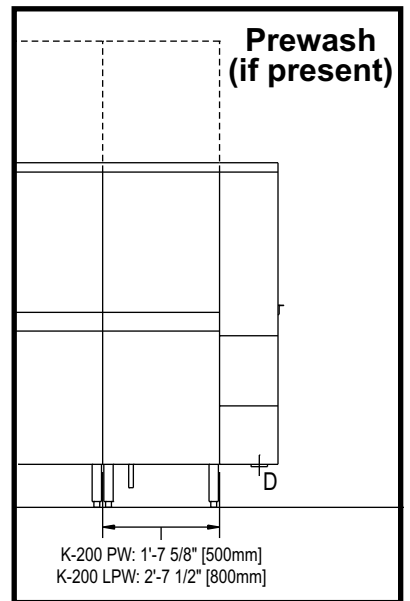
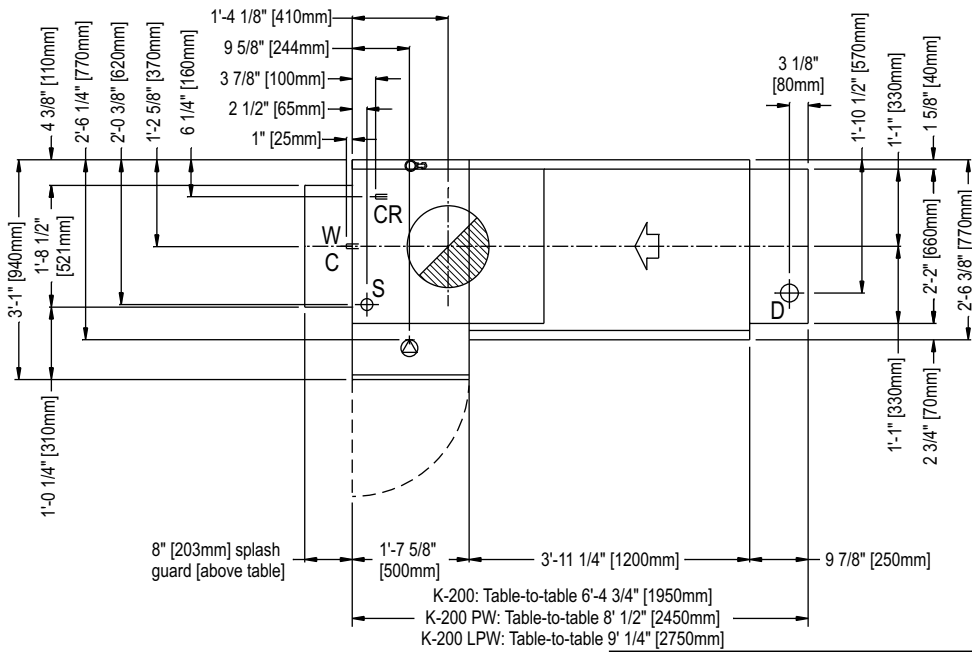
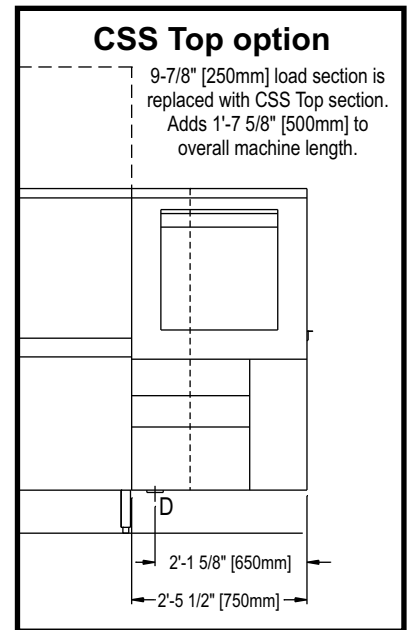
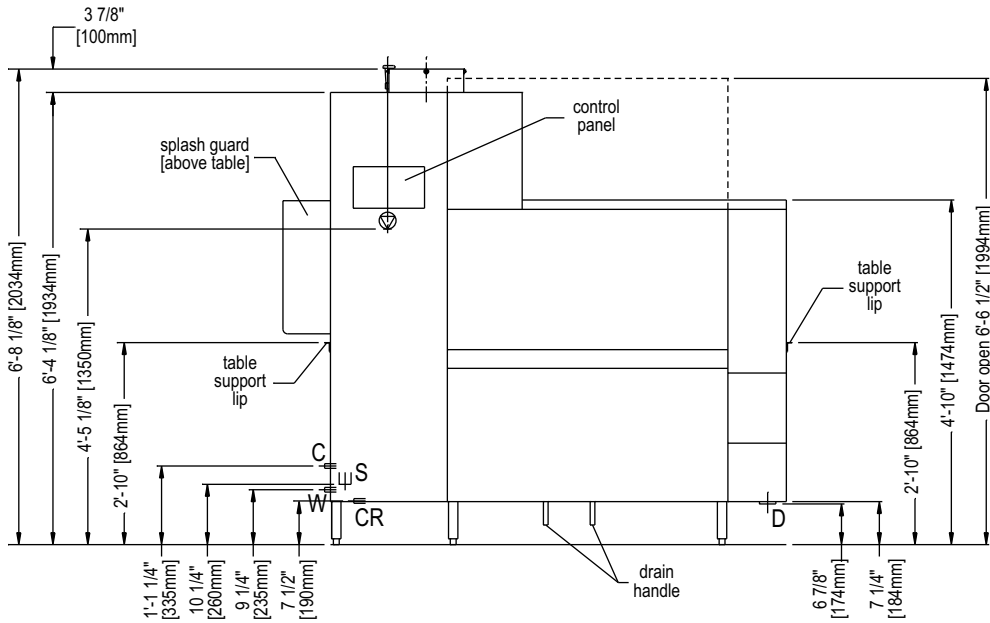


**All dimensions from floor +/- 1/2" (13mm) due to adjustable feet.**

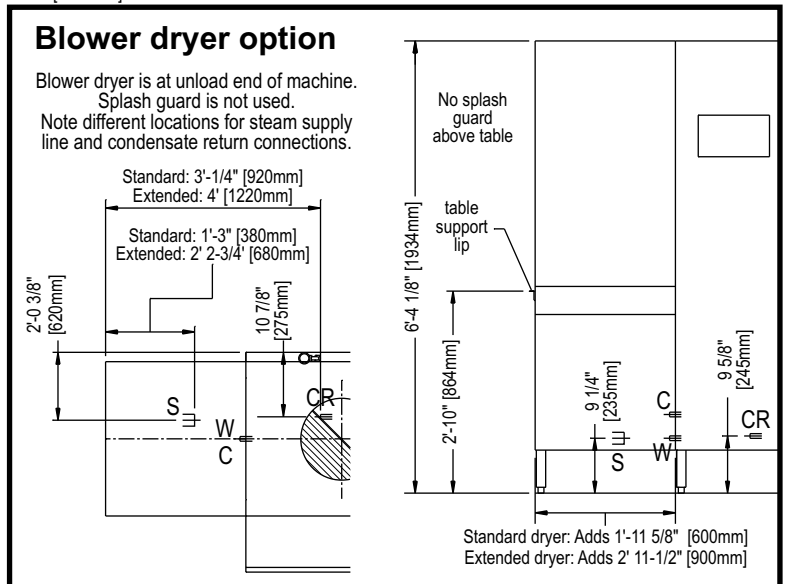




# K-200 Series, right-to-left - steam heat



All dimensions from floor +/- 1/2" (13mm) due to adjustable feet.



# K-200 Series Utility Connections

## D Drain

- 2-15/16" (75mm) OD vertical, gravity-fed drain outlet (HDPE piping). Optional 3" NPT male adapter supplied. Recommend placement directly above 4" floor drain. Additional piping to drain (if so required) to be supplied by customer.
- Connection is 6-7/8" (174mm) AFF. If using optional 2" NPT adapter, connection is 5-5/8" (144mm) AFF. Refer to **Detail View: Drain** for suggested connection.

## Electrical connection(s)

- Steam-heated machines have a single electrical terminal block.
- Electrically-heated machines have three or four electrical terminal blocks:
  - 1 - Motors and controls
  - 2 - Wash tank heaters
  - 3 - Booster heaters
  - 4 - Blower dryer heaters (if present)
- All connections are 4-wire with ground - no neutral.
- Incoming leads must be appropriately sized for electrical supply. Opening(s) in the machine for the supply lines are NOT provided and should be executed on-site using appropriate strain relief device(s).
- Connection for steam-heated machines, and terminal blocks 1-3 for electrically-heated machines, are 4' 5-1/8" (1350mm) AFF.
- Connection at terminal block 4 for electrically-heated machines is 10-3/8" (264mm) AFF.
- Refer to utility chart on Page 7 for electrical load information.

## Vent connection

- Refer to **Detail View: Vent** for suggested connection.
- The waste air connection must be corrosion-resistant and frost-free. In particular, provisions must be made to prevent air temperatures of 32°F (0°C) or colder from reaching the machine at any time. A provision for draining moisture from the waste air pipe is strongly recommended.
- Machine exhaust, without blower dryer: 354 CFM (602m<sup>3</sup>h)
- Machine exhaust, with blower dryer: 388 CFM (651m<sup>3</sup>h)
- Additional room air recommended for indirect vent: 120 CFM (170m<sup>3</sup>h)

## C Cold water connection (final rinse)

- 3/4" NPT pipe connection is 1' 1-1/4" (335mm) AFF.
- Temperature cold as available (50°F / 10°C optimum)
- Consumption 84.7 gals. (320.6 liters) per hour
- Recommended hardness 1-6 grains/U.S. gal.

## W Warm water connection (fill)

- 3/4" NPT pipe connection is 9-1/4" (235mm) AFF.
- Temperature 110-140°F (43-60°C)
- Initial fill:
  - K-200 - 37.0 gals. (140 liters)
  - K-200 PW - 52.8 gals. (200 liters)
  - K-200 LPW - 60.7 gals. (230 liters)
  - CSS Top option (if present) - add 10.6 gals (40 liters)
- Recommended hardness 1-6 grains/U.S. gal.

## S Steam connection (steam-heated machines)

- 2" NPT pipe connection
- Machines without blower dryer: pipe connection is 10-1/4" (260mm) AFF.
- Machines with blower dryer: pipe connection is 9-1/4" (235mm) AFF.
- 10-30 PSI CONSTANT steam pressure is REQUIRED. If pressure is above 30 PSI, use of a regulator is REQUIRED (supplied by customer).
- The pipe connection does NOT reflect the steam line size from the boiler to the dishwasher. The necessary steam line sizing must be determined by the facility's steam engineer based on the pressure and volume requirements.
- Consumption 187 lbs. per hour (51kW)

## CR Condensate return connection (steam-heated machines)

- 1" NPT pipe connection
- Machines without blower dryer: pipe connection is 7-1/2" (190mm) AFF.
- Machines with blower dryer: pipe connection is 9-5/8" (245mm) AFF.
- Condensate line MUST be pressure-free.

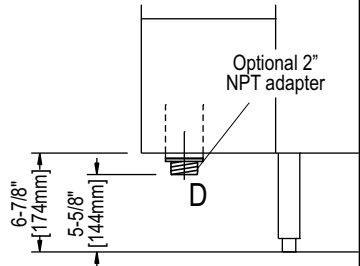
### Drain Connection

The machine is equipped with a 2-15/16" (75mm) OD vertical, gravity-fed drain. If possible, the machine drain can simply be positioned directly above a 4" floor drain.

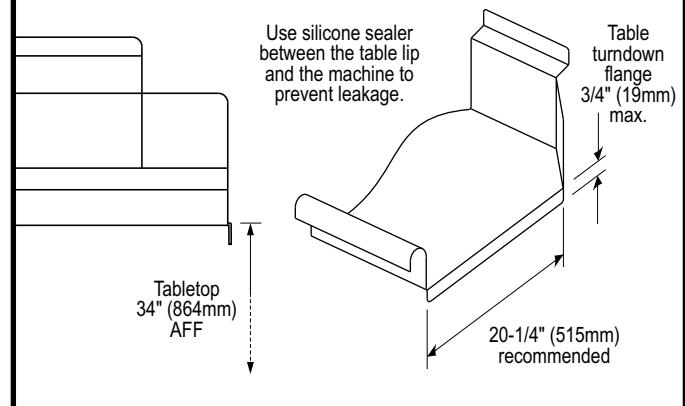
If a floor drain is not in the correct location, or if local codes require a trap, a 2" indirect drain line may be attached using the supplied 2" NPT male adapter.

Choose a piping material that:

- Complies with any applicable local and national codes
- Is rated for use with water temperatures up to 180°F/82°C
- Is rated for 3-12 pH to accommodate detergents and rinse aid in the drain water



### Recommended Tabling Construction



### Vent Connection

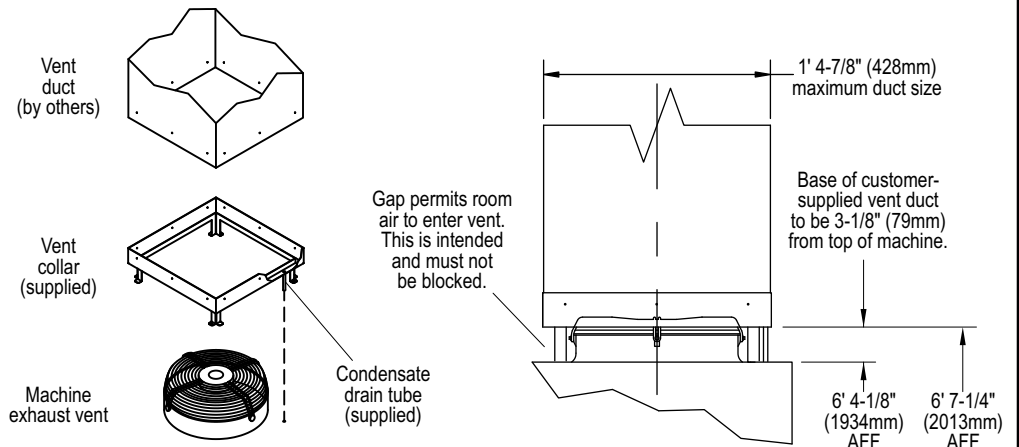
CFM ratings shown are recommended values only. Exhaust connection must be adequate for the exhaust air and comply with all applicable national and local codes.

Supplied with machine:

- Machine vent
- Vent collar. Attaches to top of machine at 4 positions
- Condensate drain tube

By others:

- Square vent duct. Sleeves inside vent collar. Attaches 3 positions per side (12 total). Attachment hardware to comply with all applicable national and local code requirements.



# K-200 Series Technical Specifications

## Operating Capacities

Racks per hour (NSF rated) .....	306
Racks per hour (standard) .....	240
Dishes per hour .....	6,000
Glasses per hour .....	8,640

## Conveyor Specifications

Conveyor belt speed (NSF rated) .....	8.51 feet/min. (2.59m/min.)
Conveyor belt speed (standard) .....	6.67 feet/min. (2.03m/min.)
Horizontal clearance .....	1' 8-1/8" (510mm)
Vertical clearance .....	1' 6" (458mm)

## Venting Specifications

Machine exhaust, without blower dryer .....	354 CFM (602m <sup>3</sup> /h)
Machine exhaust, with blower dryer .....	383 CFM (651m <sup>3</sup> /h)
Additional room air recommended for indirect vent .....	120 CFM (170m <sup>3</sup> /h)
<b>Total</b>	
Machines without blower dryer .....	474 CFM (806m <sup>3</sup> /h)
Machines with blower dryer .....	503 CFM (855m <sup>3</sup> /h)

## Water Specifications

Minimum water temperatures:	
Prewash tank .....	No minimum - 110-140°F (43-60°C) typical
Wash tank .....	160°F (72°C)
Auxiliary rinse tank .....	165°F (74°C)
Final rinse .....	180°F (82°C)
Incoming water temperatures:	
Final rinse connection .....	Cold as available (50°F / 10°C optimum)
Tank fill connection .....	110-140°F (43-60°C)
Initial fill	
K-200 .....	37.0 gals. (140 liters)
K-200 PW .....	52.8 gals. (200 liters)
K-200 LPW .....	60.7 gals. (230 liters)
CSS Top option (all) .....	Add 10.6 gals. (40 liters)

Incoming water line size	
Final rinse connection .....	3/4" NPT
Fill connection .....	3/4" NPT
Recommended water hardness .....	1-6 grains/U.S. gal.
Consumption at 100% capacity: .....	84.7 gals. (320.6 liters)/hr. 0.35 gals. (1.34 liters)/rack
Final rinse flow rate .....	1.41 gals.(5.34 liters)/min.

## Machine Electrical Specifications

	208 V/60 Hz/3 Ph				230 V/60 Hz/3 Ph				460 V/60 Hz/3 Ph			
	TB1	TB2	TB3	TB4	TB1	TB2	TB3	TB4	TB1	TB2	TB3	TB4
K-200, electric tank heat .....	18.3A	66.7A	75.0A	--	18.3A	58.2A	65.5A	--	8.4A	29.8A	33.7A	--
K-200 PW, electric tank heat .....	20.9A	66.7A	75.0A	--	20.9A	58.2A	65.5A	--	9.8A	29.8A	33.7A	--
K-200 LPW, electric tank heat .....	28.1A	66.7A	75.0A	--	28.1A	58.2A	65.5A	--	12.3A	29.8A	33.7A	--
K-200, steam coil tank heat .....	18.3A	--	--	--	18.3A	--	--	--	8.4A	--	--	--
K-200 PW, steam coil tank heat .....	20.9A	--	--	--	20.9A	--	--	--	9.8A	--	--	--
K-200 LPW, steam coil tank heat .....	28.1A	--	--	--	28.1A	--	--	--	12.3A	--	--	--
CSS Top .....	+3.9A	--	--	--	+3.9A	--	--	--	+2.3A	--	--	--
Blower dryer, electrically-heated machines .....	--	--	--	16.0A	--	--	--	14.0A	--	--	--	9.2A
Blower dryer, steam coil-heated machines .....	+16.0A	--	--	--	+14.0A	--	--	--	+9.2A	--	--	--

## Motor ratings

Wash pump motor .....	3.0 hp (2.2 kW)
Prewash pump motor, K-200 PW only .....	0.75 hp (0.55 kW)
Prewash pump motor, K-200 LPW only .....	3.0 hp (2.2 kW)
Auxiliary rinse pump motor .....	0.75 hp (0.55 kW)
Final rinse pump motor .....	0.75 hp (0.55 kW)
Conveyor motor .....	0.125 hp (0.09 kW)
Vent motor .....	0.25 hp (0.19 kW)
CSS Top pump motor (if equipped) .....	1.0 hp (0.75 kW)
Blower dryer motor (if equipped) .....	0.5 hp (0.37 kW)

## Electric tank heater ratings (electrically-heated machines only)

Wash tank .....	24 kW
Auxiliary rinse tank .....	12 kW
Booster heater .....	15 kW
Blower dryer heater .....	3 kW

## Steam Specifications (steam-heated units only)

Steam line connection .....	2" NPT
Condensate return connection .....	1" NPT

Steam pressure .....	10-29 psi (1-2 bars)
Steam consumption .....	187 lbs./hr. (51 kW)*

\* NOTE: Steam-heated machines use electrically-heated blower dryer (3 kW).

**Note: All specifications are subject to change without notice based on MEIKO's dedicated product improvement program.**

# Equipment Specification: K-200 Series Rack Conveyor - Item No. \_\_\_\_\_

Item will be an NSF and ETL-listed MEIKO:

\_\_\_ **K-200** single tank, rack conveyor dishwasher, consisting of a wash zone with 3 hp pump motor, a pumped auxiliary rinse zone with 3/4 hp pump motor, and a pumped final rinse zone with 3/4 hp pump motor. Total length of the machine (table-to-table) will be 6' 4-3/4" (1950mm).

\_\_\_ **K-200 PW** single tank, rack conveyor dishwasher, consisting of a prewash compartment with a 3/4 hp pump motor, a wash compartment with a 3 hp pump motor, an auxiliary rinse compartment with a 3/4 hp pump motor, and a final rinse compartment with a 3/4 hp pump motor. Total length of the machine (table-to-table) will be 8' 1/2" (2450mm).

\_\_\_ **K-200 LPW** single tank, rack conveyor dishwasher, consisting of a prewash compartment with a 3 hp pump motor, a wash compartment with a 3 hp pump motor, an auxiliary rinse compartment with a 3/4 hp pump motor, and a final rinse compartment with a 3/4 hp pump motor. Total length of the machine (table-to-table) will be 9' 1/4" (2750mm).

Unit will utilize an internal booster heater to maintain a 180°F (82°C) minimum fresh water sanitizing rinse. Final rinse will be pumped for constant pressure and consistent rinsing results regardless of variation in water supply pressure. Unit will be NSF-rated with speed of 8.51 feet (2.59m) per minute. Unit will have a capacity of 240 racks per hour at a standard speed of 6.67 feet (2.03m) per minute. Unit will consume an NSF-rated 84.7 U.S. gals. (320.6 liters) per hour (0.35 U.S. gals./1.34 liters per rack).

Electrical characteristics:

\_\_\_ 208V/60 Hz/3 Ph

\_\_\_ 230V/60 Hz/3 Ph

\_\_\_ 460V/60 Hz/3 Ph

Wash tank temperature will be maintained at a minimum of 160°F (72°C). Tank heating will be accomplished by:

\_\_\_ Thermostatically-controlled electric heating elements

\_\_\_ Thermostatically-controlled stainless steel steam coils

Direction of conveyor travel will be:

\_\_\_ Right-to-Left

\_\_\_ Left-to-Right

Unit will have the following standard features:

- Capacity of 240 racks/hr. and 0.35 gals./rack
- Pumped final rinse for constant pressure and consistent rinsing results regardless of variations in water supply pressure
- Pumped auxiliary rinse zone to supplement the final rinse zone
- Waste air heat recovery system to reclaim heat generated by the machine, using it as free energy to preheat the incoming rinse water
- Double-wall, insulated construction
- Mike 3 electronic controller for fully automatic operation, variable conveyor speeds and advanced service diagnostics
- Wash arm spray pattern that ensures effective coverage with varying angles and offset spray jets. Slotted, concave wash nozzles and captivated end caps to promote easier cleaning
- Rack rail-mounted pawl bar drive system for smooth travel at high speeds and an unobstructed wash pattern
- Front sloping V-shaped wash tank for complete tank drainage, accessibility, and cleanability
- Low level heater protection
- Powerful 3 Hp wash pump motor is self-draining. Pump motor is internal and vertically installed for easy access and serviceability
- Pump housing and impeller constructed of stainless steel
- Single point drain connection
- Single point ventilation connection
- Large front access door(s) can be opened with one hand and remain open without latches, aiding machine accessibility and cleanability
- Large, removable pan strainer(s)
- Models equipped with a prewash include a separate prewash scrap basket

Unit will incorporate a MIKE 3 electronic control system that allows operation at 3 different conveyor speeds (maximum 6.57 feet/ 2.00m per minute, 240 racks per hour) while consuming an NSF-rated 84.7 gals. (320.6 liters) of water per hour (0.35 gals./ 1.34 liters per rack).

Unit will have the following optional features (check all that apply):

\_\_\_ Blower dryer system incorporating a single blower and 3kW electric heaters for complete drying of all dishes, crockery and silverware

\_\_\_ 1' 11-5/8" (600mm) in length

\_\_\_ 2' 11-3/8" (900mm) in length

\_\_\_ CSS Top chemical savings system

\_\_\_ Hinged front access doors

\_\_\_ Single-point electrical connection (electric heat only)

\_\_\_ External vent fan control

\_\_\_ Table limit switch

\_\_\_ Inline (whisker switch) style

\_\_\_ End stop style

\_\_\_ Flanged, bolt-down feet

\_\_\_ Drain water tempering kit

\_\_\_ 90° loader

\_\_\_ 90° power unloader